

HOPKINTON MAIN STREET			
STATE	REG. #/PROJ. NO.	SHEET NO.	TOTAL SHEETS
MA.	CM3/STP-033/0111	12	184
PROJECT FILE NO. 609043			
UTILITY PLANS			

Typical Signage at Each side of Setup
-Spacing = 100'

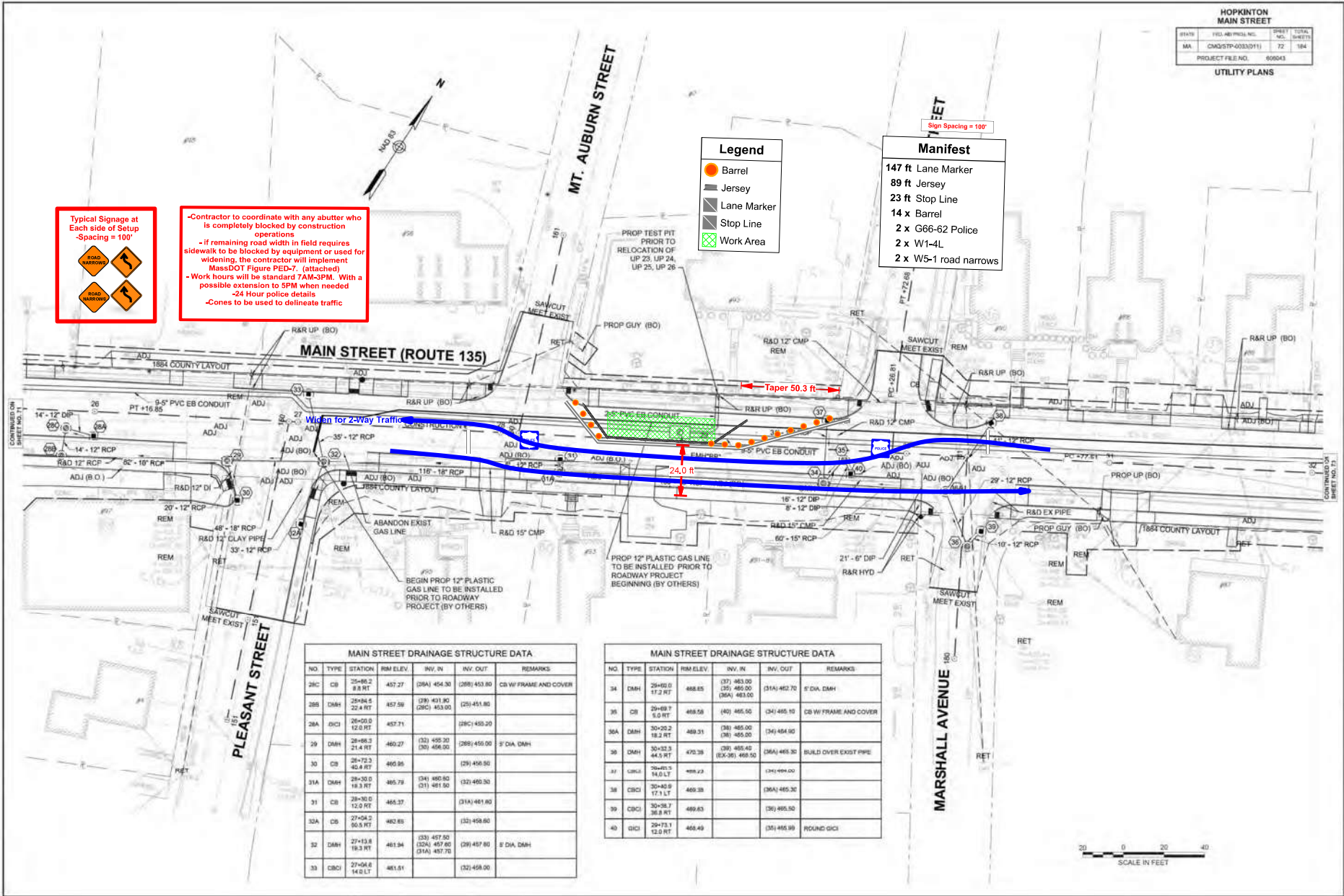
-Contractor to coordinate with any abutter who is completely blocked by construction operations
- If remaining road width in field requires sidewalk to be blocked by equipment or used for widening, the contractor will implement MassDOT Figure PED-7, (attached)
- Work hours will be standard 7AM-5PM. With a possible extension to 5PM when needed
- 24 Hour police details
- Cones to be used to delineate traffic

Legend

- Barrel
- Jersey
- Lane Marker
- Stop Line
- Work Area

Manifest

- 147 ft Lane Marker
- 89 ft Jersey
- 23 ft Stop Line
- 14 x Barrel
- 2 x G66-62 Police
- 2 x W1-4L
- 2 x W5-1 road narrows



MAIN STREET DRAINAGE STRUCTURE DATA						
NO.	TYPE	STATION	R&M ELEV.	INV. IN	INV. OUT	REMARKS
28C	CB	25+46.2 8.8 RT	457.27	(28A) 454.30 (28B) 453.80		CB W/ FRAME AND COVER
28B	DMH	25+46.5 22.4 RT	457.38	(28) 451.80 (28C) 453.00	(28) 451.80	
28A	CBICI	25+50.0 12.0 RT	457.71		(28C) 455.20	
29	DMH	26+48.3 21.4 RT	460.27	(32) 455.30 (30) 456.00	(28B) 455.00	3' DIA. DMH
30	CB	26+72.3 42.4 RT	465.85		(29) 456.50	
31A	DMH	28+30.0 18.3 RT	465.79	(34) 460.80 (31) 461.50	(32) 460.30	
31	CB	28+36.0 12.0 RT	465.37		(31A) 461.80	
32A	CB	27+54.5 50.5 RT	460.85		(32) 458.60	
32	DMH	27+13.8 19.3 RT	461.94	(33) 457.50 (24A) 457.85 (31A) 457.70	(28) 457.80	8' DIA. DMH
33	CBICI	27+54.8 14.0 LT	461.61		(32) 458.00	

MAIN STREET DRAINAGE STRUCTURE DATA						
NO.	TYPE	STATION	R&M ELEV.	INV. IN	INV. OUT	REMARKS
34	DMH	29+42.0 17.3 RT	468.85	(37) 463.00 (35) 465.00 (36A) 463.00	(31A) 462.70	5' DIA. DMH
35	CB	29+49.7 5.0 RT	468.58	(40) 465.50	(34) 465.10	CB W/ FRAME AND COVER
36A	DMH	30+20.2 18.2 RT	469.31	(38) 465.00 (36) 465.00	(34) 464.80	
36	DMH	30+32.3 44.3 RT	475.38	(38) 465.40 (EX-36) 469.50	(36A) 465.30	BUILD OVER EXIST PIPE
37	CBICI	30+48.3 14.0 LT	468.23		(34) 469.00	
38	CBICI	30+48.8 17.1 LT	469.38		(36A) 465.30	
39	CBICI	30+38.7 36.8 RT	469.63		(36) 465.50	
40	CBICI	29+72.1 12.0 RT	468.49		(35) 465.80	ROUND DICI

